



# NaAVIC

## Quick Start Guide

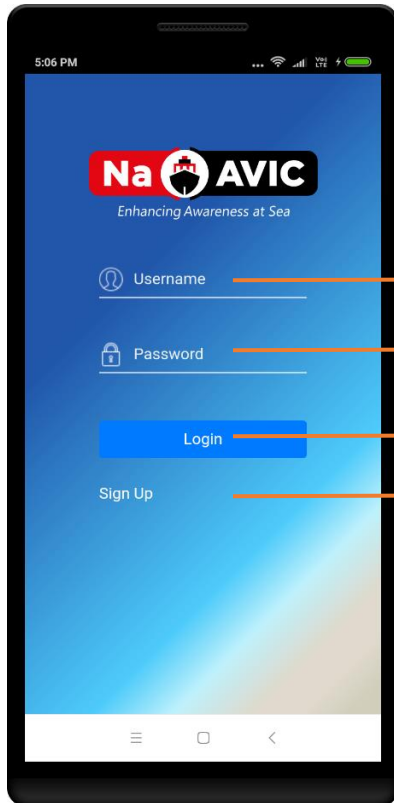
(V 1.0)

NaAVIC is a registered trademark of IIC Technologies.

## Contents

Sign in/Sign up .....	3
Landing Screen .....	5
Route Planning and Management .....	7
Import Route / Track.....	8
Edit Way Point.....	9
Navigation .....	10
Measure Distances.....	11
Multi Point Distance Calculation.....	12
Feature Information.....	13
Marine Traffic.....	14
Add Features Object .....	15
Man over Board .....	16
Offline Maps.....	17
NaAVIC Messenger.....	18
Settings.....	19
Units .....	21
Layers .....	22
Profile.....	23
Edit Profile.....	24
Legend.....	25

# Sign in/Sign up



Existing users enter credentials to Login.

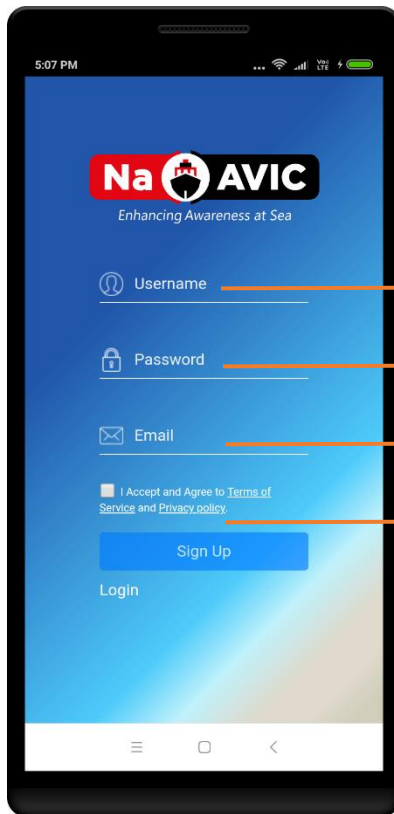
New users Sign up to register.

Username → Enter User Name

Password → Enter Password

Login → Login

Sign Up → Sign up to register as a new user



To Sign Up, fill out all the required fields on the screen.

Agree to the privacy policy and terms of service.

Enter Username

Enter Password

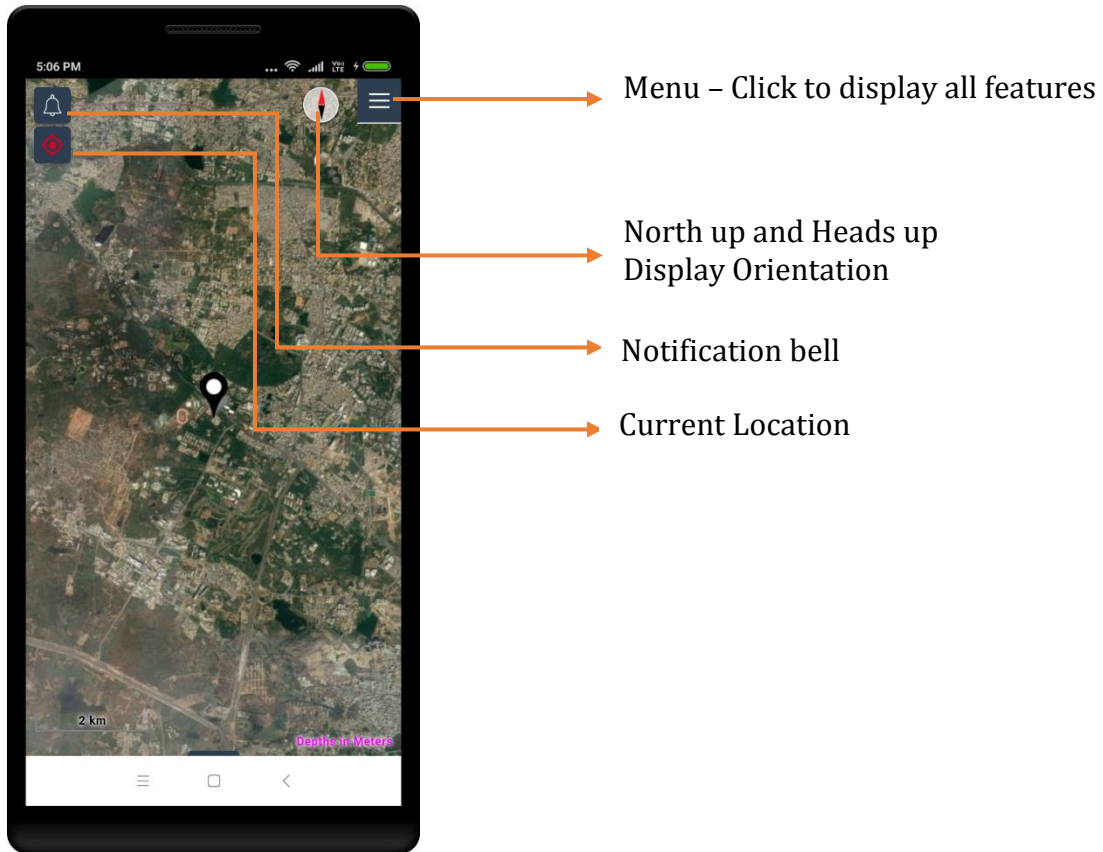
Enter Email Id

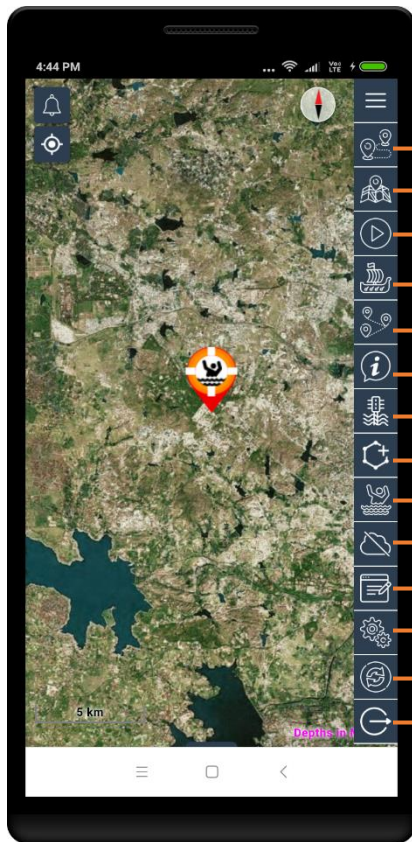
Accept the Terms of Service and Privacy Policy

Application will notify once the registration is successful.

User can sign in with the new credentials.

# Landing Screen





Route Planning and management

Way Point List

Navigation

Measure Distances

Multi Point Distance calculator

Information

Marine Traffic

Add Features & Object

Man over Board

Offline Maps

NaAVIC Messenger


Settings

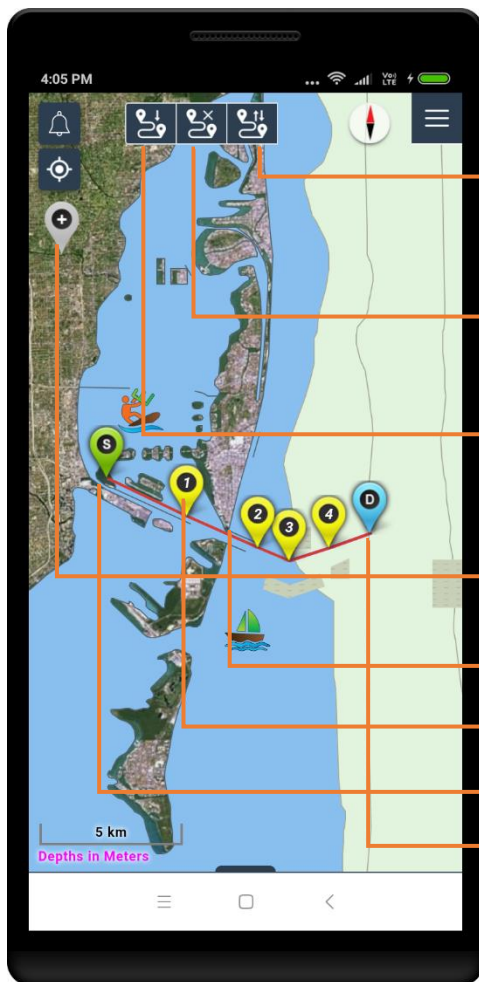
Refresh

Logout

# Route Planning and Management

This feature allows users to create comprehensive routes for navigation. Users can create, edit, clear, and redirect Way Points to help plan and update their route.

Menu > Route planning & management icon 



This enables users to reverse the existing route – start and destination points.

This lets users clear the route.

This lets users import saved routes (RTZ or KML formats).

This lets users create way points. Click to generate a new way point.

Route


Way points

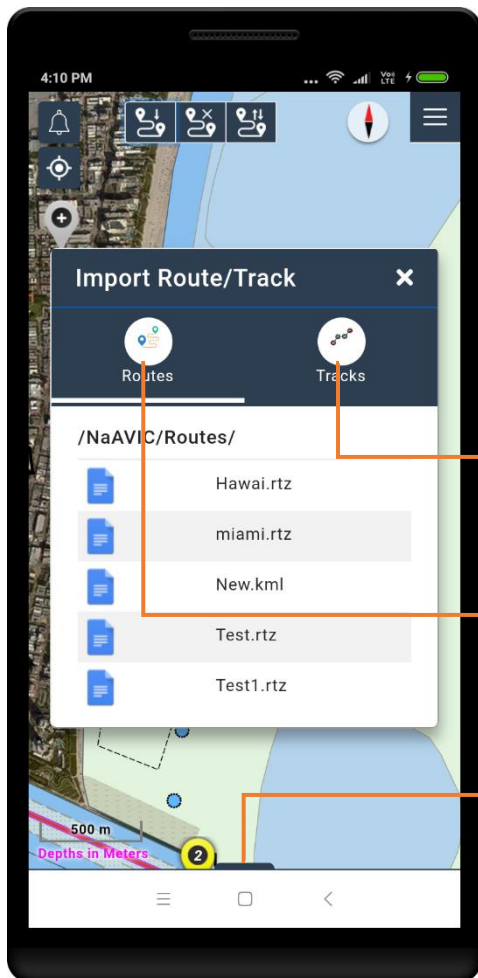
Start Way Point

End Way Point

# Import Route / Track

This feature allows users to import a saved Route or Track and activate that for navigation.

Tap on Import Route / Track icon 




User can import Tracks in RTZ or KML formats

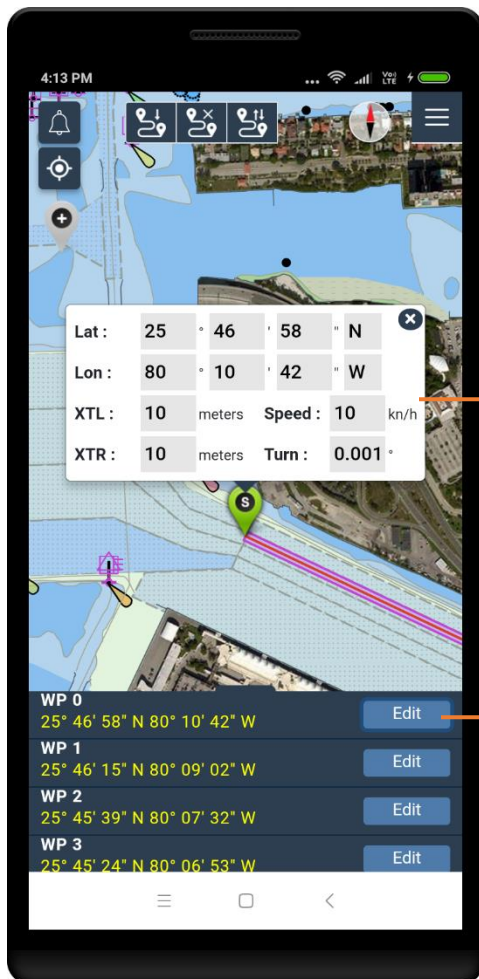
User can import Routes in .rtz or kml formats

Swiping up displays details such as SOG, COG etc.

# Edit Way Point

This feature allows users to edit a way point and make changes to parameters such as position, cross track buffer, speed and rate of turn.

Menu > Way point icon. 



Way point details

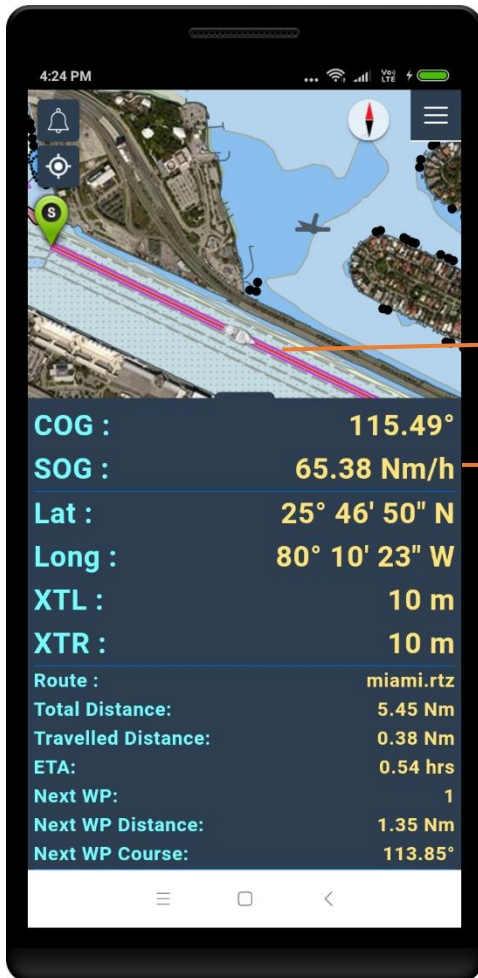
Tap on Edit to modify the way point

# Navigation

Users can monitor their track or voyage in real time using GPS integration.

Menu > Navigation icon. 

Drag the container handle (in the bottom) up for Navigation Information.



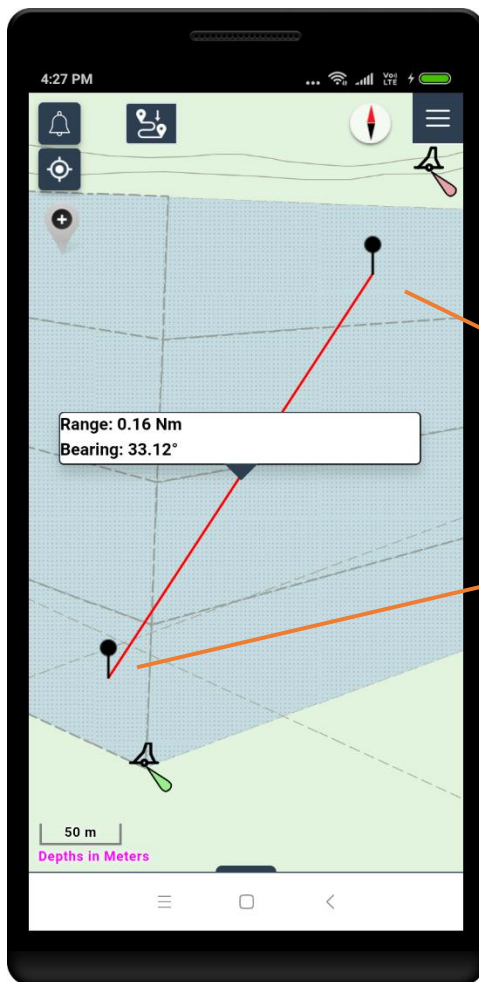
Turn on GPS to Plot the current location and track positioning, tracks history and waypoints. The application will also display navigation information like COG, SOG, Latitude, Longitude, distance etc.

# Measure Distances

This feature enables users to measure the distance and bearing between two known points or more.

Menu > Measure Distances icon 


Pick two points to calculate the distance and bearing



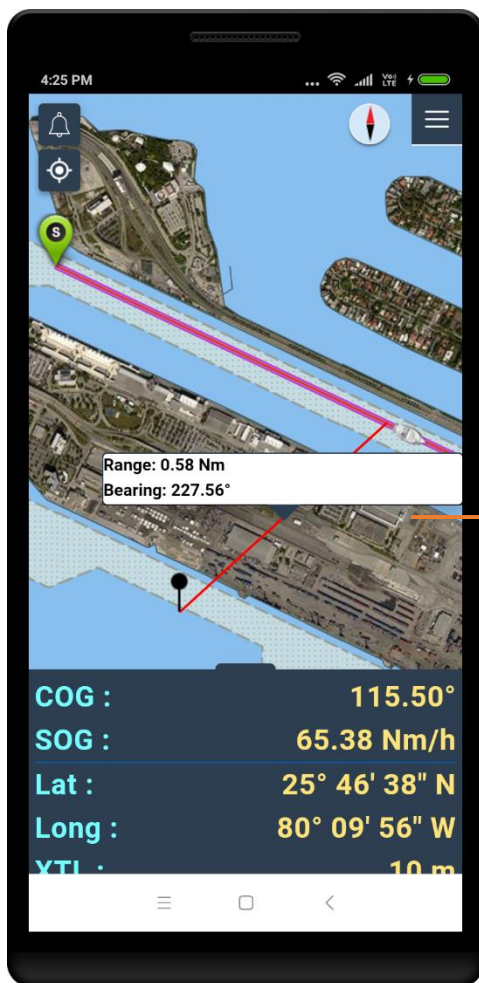
Displays Range and Bearing.

# Measure Distance from Ship

This feature calculates the distance between the ship to a known point. Displays Range & Bearing details.

Menu > Multi point distance calculation icon. 


Pick any known point to calculate distance from ship



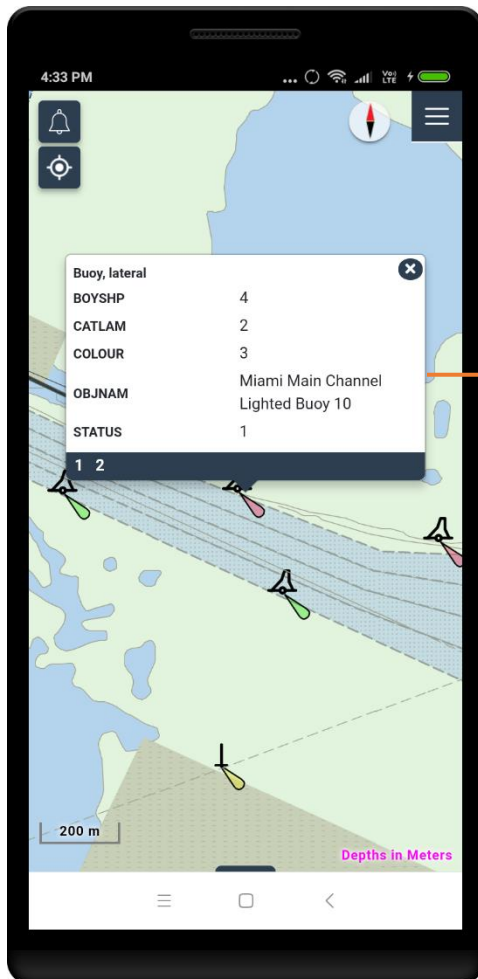
Displays Range & Bearing.

# Feature Information

This feature enables users to tap on any feature on the screen to get information of that point.

Menu > Information icon. 

Tap on any feature



Displays feature's information in detail at the given location.

Click on the next number (bottom of info) to know the feature information

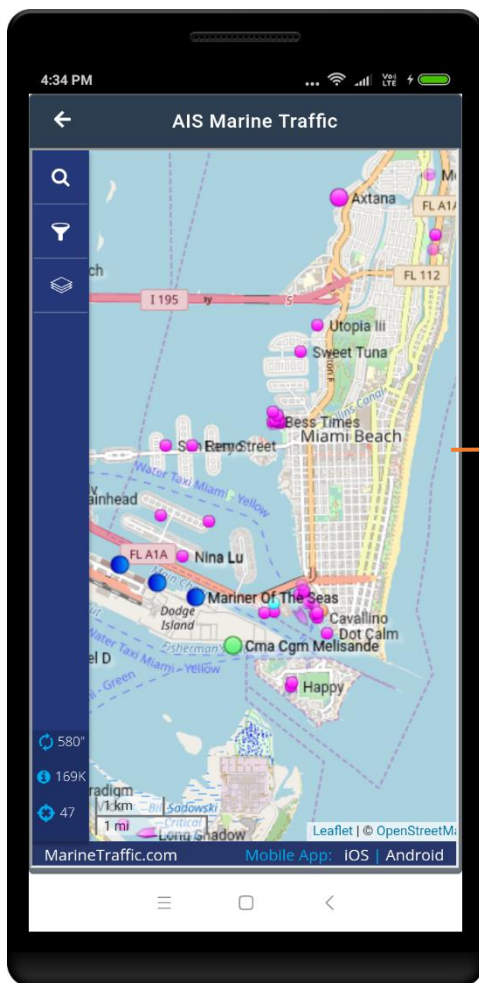
# Marine Traffic

This feature provides details about marine traffic of that location to the user.

Menu > Marine Traffic icon or swipe right on screen.



The AIS Marine Traffic tab is being displayed.



Displays the vessels on screen in the map coverage. Click on a Vessel to get more info. It provides real time information of movements of ships and the current location of ships in harbours and ports

# Add Features Object

This feature enables users to add objects with text and media to the User Overlay to share information such as diving, fishing, surfing spots etc. or interesting photos and sights, with the rest of the NaAVIC community. The User Overlay is visible to all NaAVIC Users but an object can only be modified or deleted by the owner.

Menu > Add Features Objects icon 

Draw Polygon

Draw Point

Enter text in the provided text box.

Add selected objects to this feature.

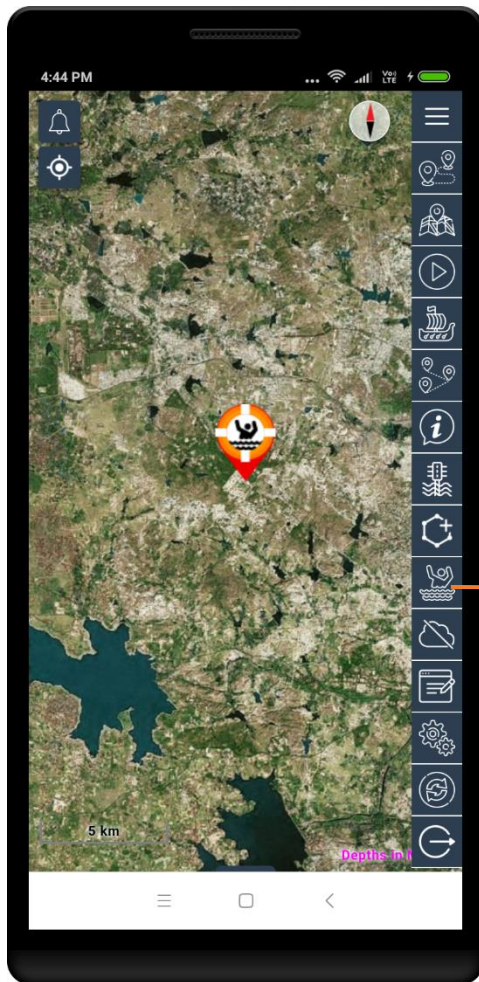
Attach images etc.

Select various predefined icons such as fishing, boating, surfing etc., to add on the screen.

# Man over Board

Using this feature NaAVIC users can let other registered users know if any person has fallen offboard and needs help.

Menu > Man over Board icon 



Notifies if anyone falls off the vessel or needs any assistance on the voyage

# Offline Maps

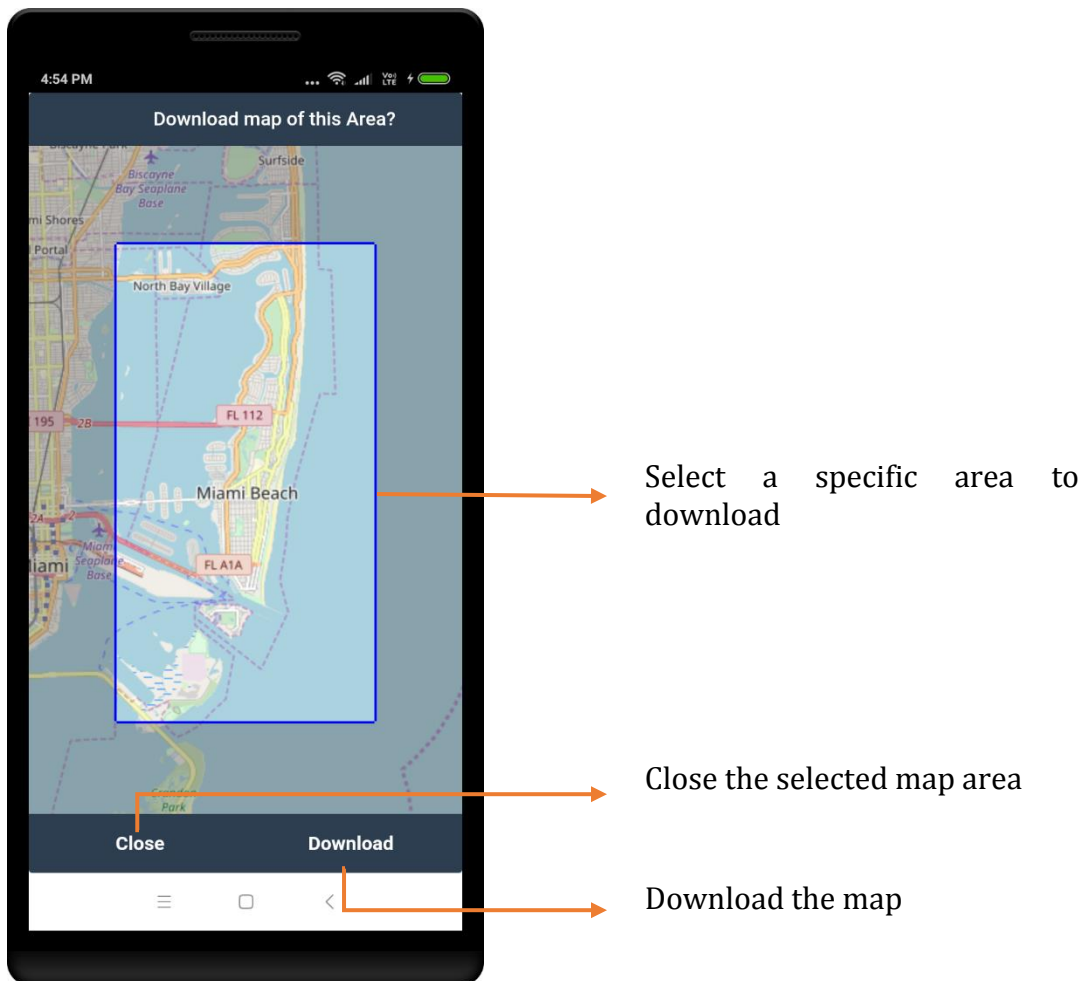
This feature lets users download maps for offline use.

Menu > Offline Maps icon 

Choose the navigation area by zooming in and out

Click on 'Download'

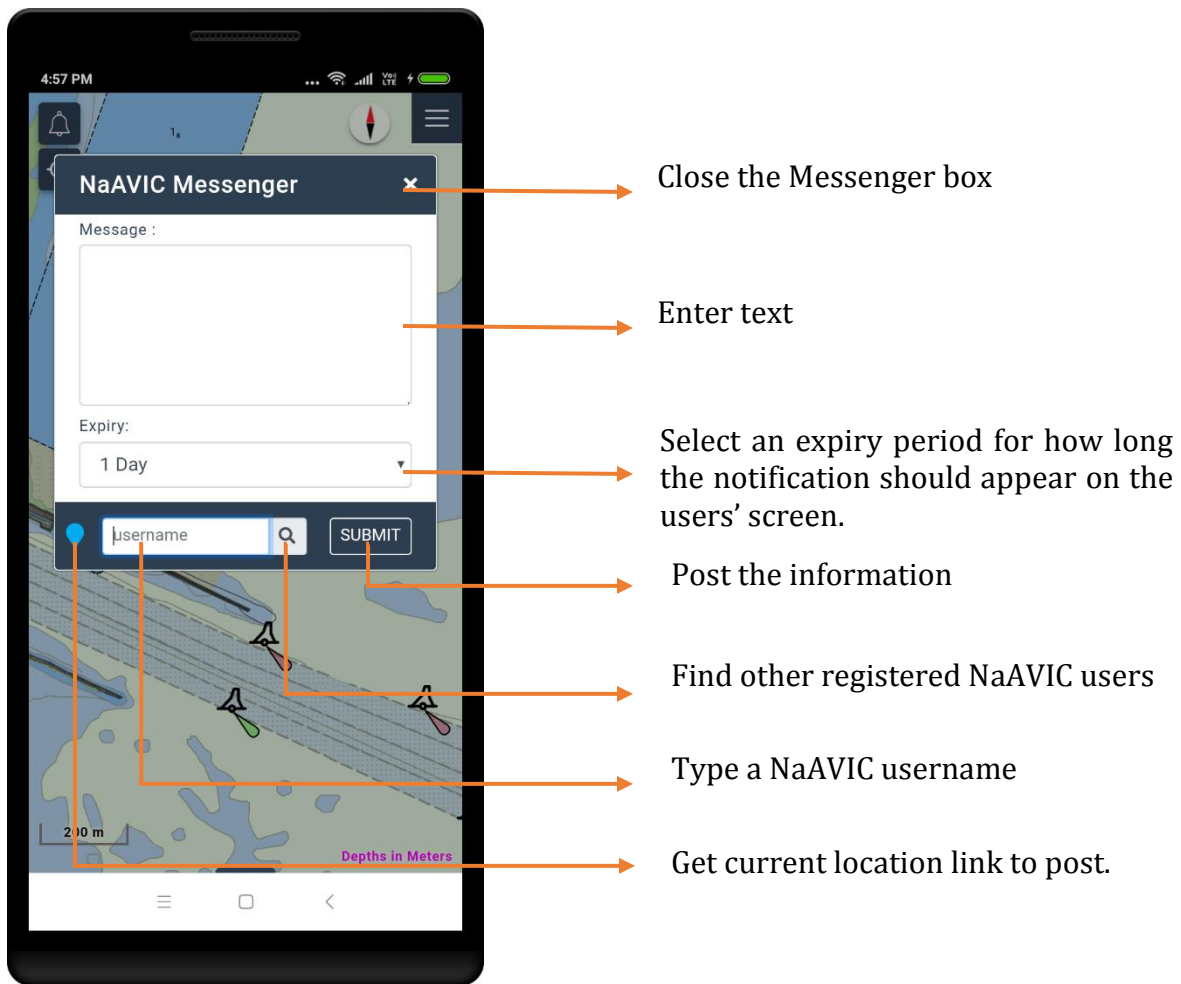
Note: The offline data will be stored in local device and hence the application use the data while navigation.



# NaAVIC Messenger

Using this feature users of NaAVIC can send information, location etc. to other users. Users can set an expiry period for the notifications.

Menu > Messenger icon



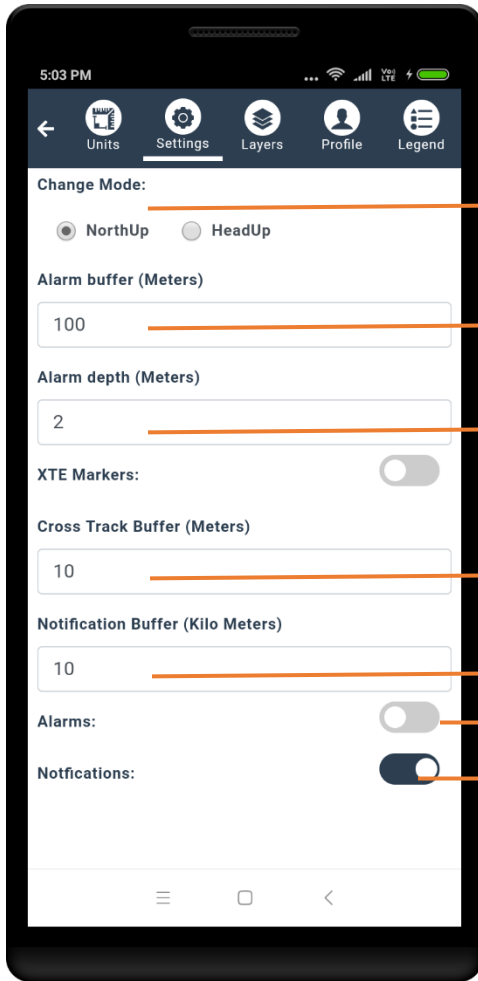
# Settings

Go to Settings to customize the various available features and modify the user profile.

Menu > Settings icon 

The Setting function shows below options for configure the application in terms of set on/off layers, display, Units, Profile information and Legend of Chart Symbols & Abbreviations.

- Units
- Settings
- Layers
- Profiles
- Legend



User can check radio button for Northup or Head Up display orientation.

Set value for Alarm buffer in meters and get notified

Set value for Alarm depth in meters and get notified if depth meets the distance.

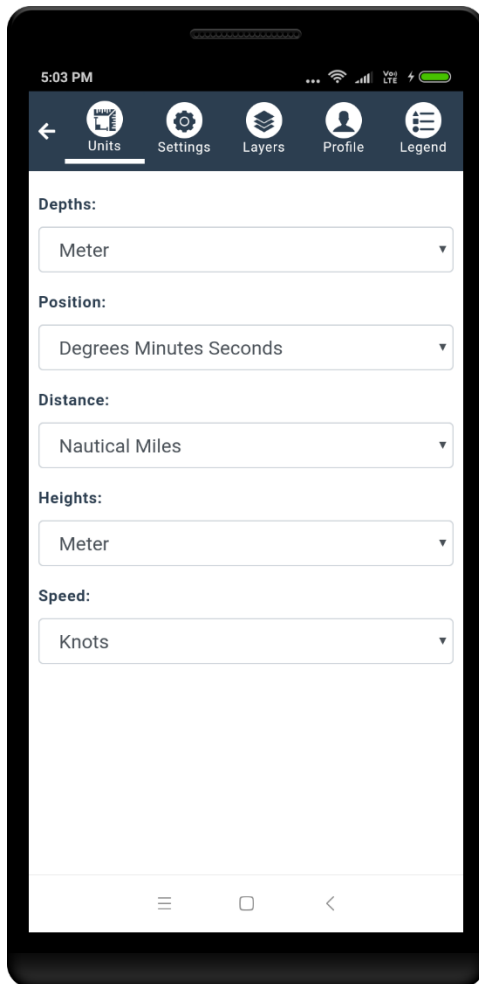
Set value for Cross Track buffer in meters and get notified if vessel crosses defined route while sailing.

Set value for Notification buffer in KMS at which circumference the user wants to get notifications.

Alarm On/Off

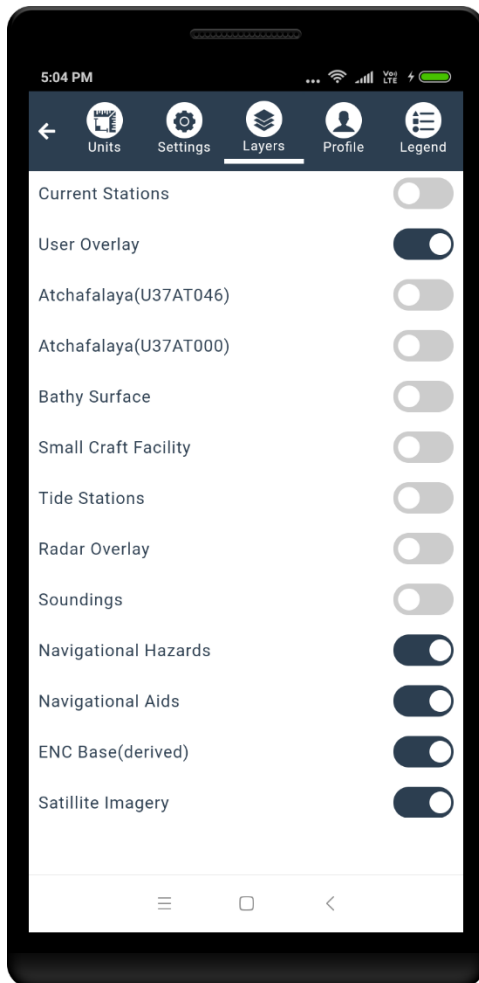
Notification On/Off

## Units



Set units for Depth, Position, Distance, Height and Speed using the available drop downs.

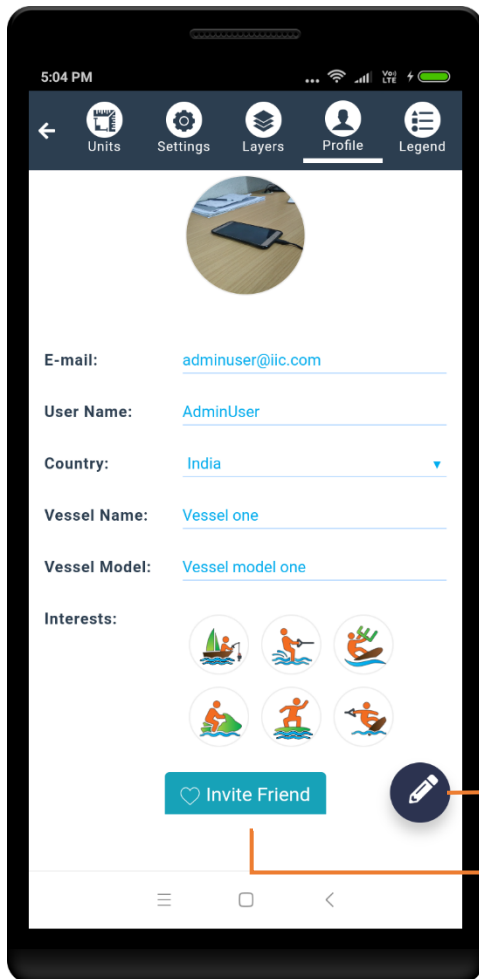
## Layers



Choose which layers you want displayed on the map.

## Profile

The profile tab lets users view and modify their profile and invite friends to the NaAVIC community.



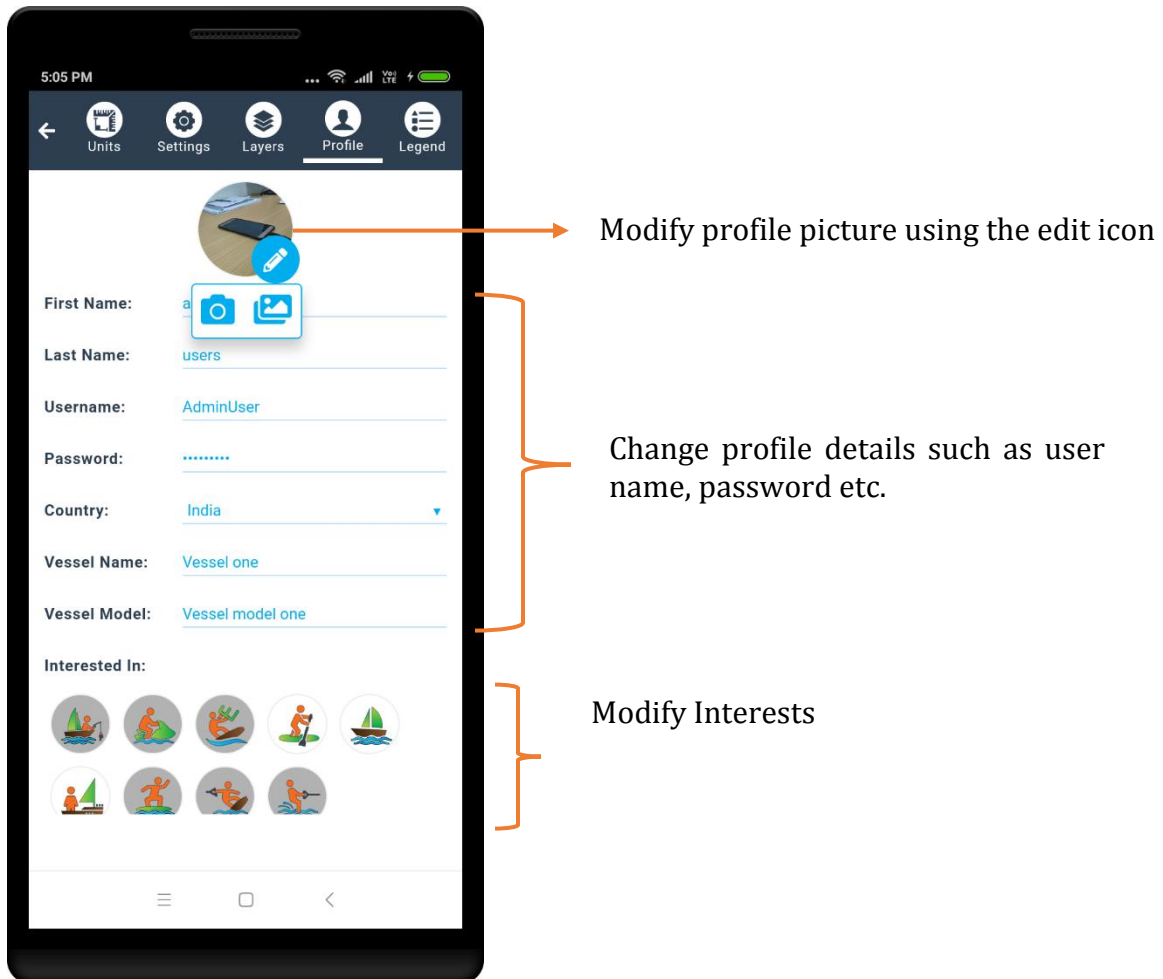
User details such as Email, User Name, Country, Vessel Name, Vessel Model.

Choose Interests such as boating, fishing, surfing etc.

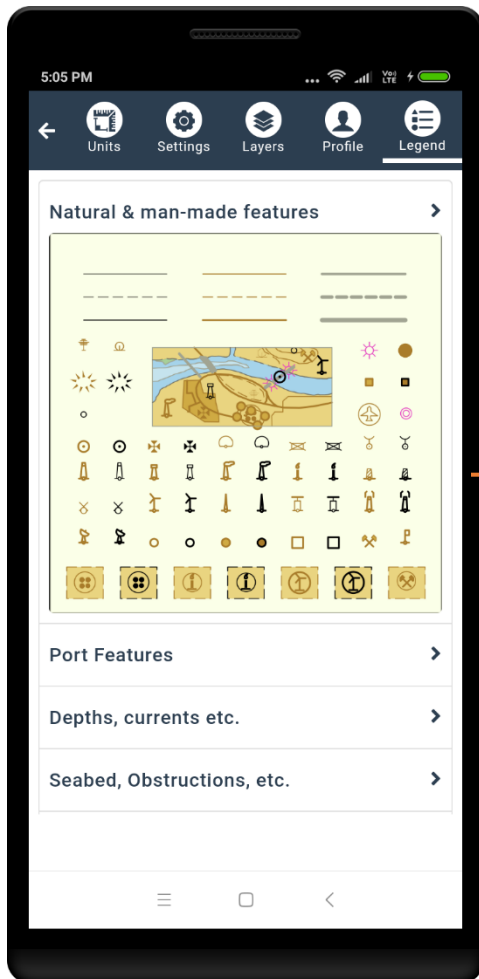
Edit user profile

Invite friends to join NaAVIC. It opens the default email application on device.

## Edit Profile



## Legend



Legend of Navigational Charts symbols